

Part# SKY-3003P & TS/R-2A: Remote/Wall Thermostat Wiring

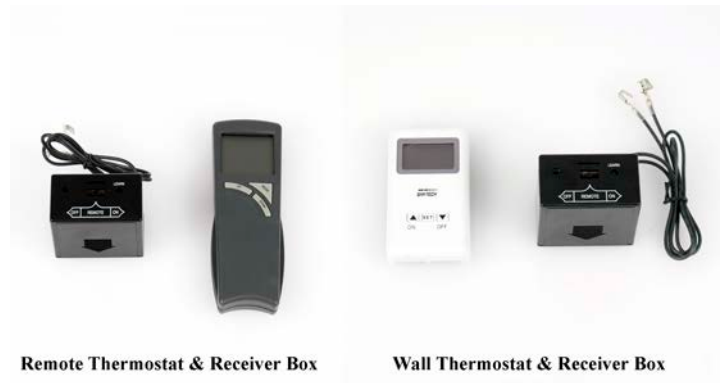
Rev. Date 01/15/2025

Parts Needed:

- (1) Sky-3003P Remote Thermostat
- OR-
- (1) TS/R-2A Wall Thermostat

Tools Needed:

- (optional) Needle Nosed Pliers



1. Make sure the stove is cool.

2. Locate the control valve. When facing the stove, the control valve location is at the back right-hand side of the stove. The valve is partially covered by controller cover. Go behind the stove to see the control valve access. The stove arrives with the following wiring configuration.

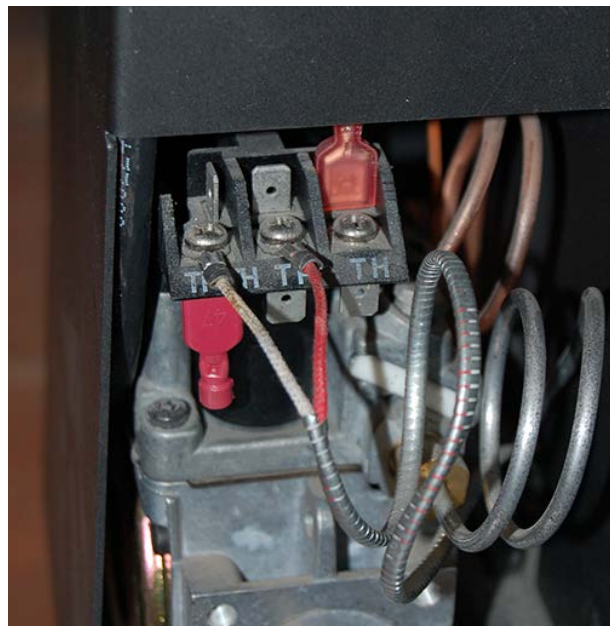


Figure 1



3. Start by disconnecting the red-capped spade connector from the underside of the TPTH valve terminal.



Figure 2

4. There are two identical leads coming off the black receiver box. Plug one of the black spade connection wires from the receiver box into the red-capped female spade connector that was removed from the underside of the TPTH terminal in step 3. To make the connection easier bend the spade coming from the receiver box wire straight with needle-nose pliers (Fig 3), leave the other as a female connection. *NOTE: The receiver box for the remote & wall thermostat are identical.*

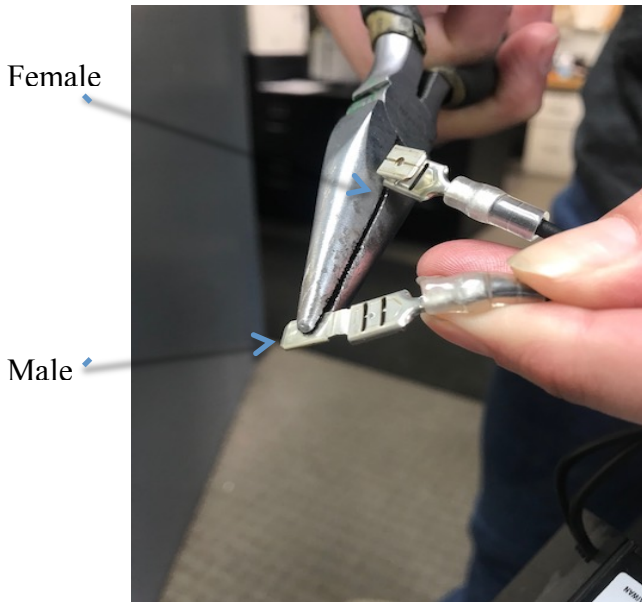


Figure 3: One receiver box spade connector will become a male fitting and the other will be left female

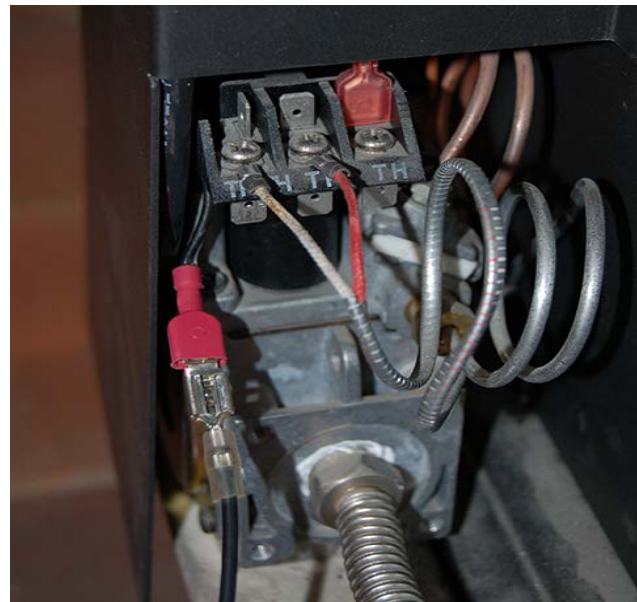


Figure 4: Male spade from the receiver box connected to the red capped female spade connector.

5. Plug the female spade connection wire coming from the receiver box into the male spade connection on the underside of the TPTH terminal (where you removed the first red-capped connection in Step 3 - Fig 2).

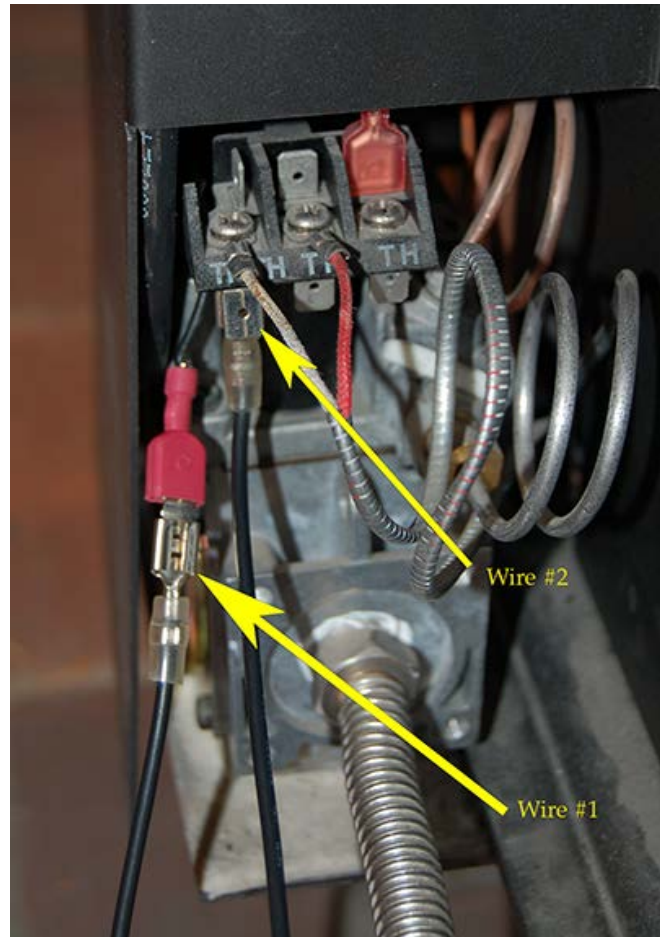


Figure 5

6. Install the four AA batteries into the receiver box and place the toggle switch to the center "remote" position.



Figure 6

7. Install batteries into the remote thermostat (two AAA) or wall thermostat (two button cell). To test the communication, light the pilot, turn the control knob to “ON”, and turn the “ON/OFF” toggle switch to ON. Manually increase the set temperature on the transmitter 5+ degrees above the room temperature. If the burner lights, the installation is complete. If not, continue to step 8.

8. If the burner did not light, you will need to go through the “LEARN” procedure to establish communication between the remote or wall thermostat (transmitter) and the receiver box.

9. Bring the remote or wall thermostat over to the receiver box. Using a paperclip or pencil tip, depress and release the “learn” button on the top right of the receiver box (Fig 7). As soon as the “learn” button is released, repeatedly press the “Mode” button on the remote (Fig 8) or the “ON” button on the wall thermostat (Fig 9), until a series of beeps is heard from the receiver box. The beep pattern indicates communication.



Figure 7: Depress and release the learn button



Figure 8: Remote: Repeatedly press the mode button



Figure 9: Wall Thermostat: Repeatedly press the set button